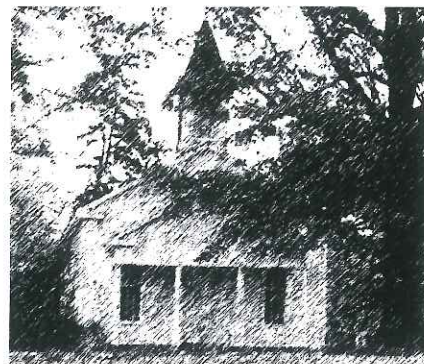
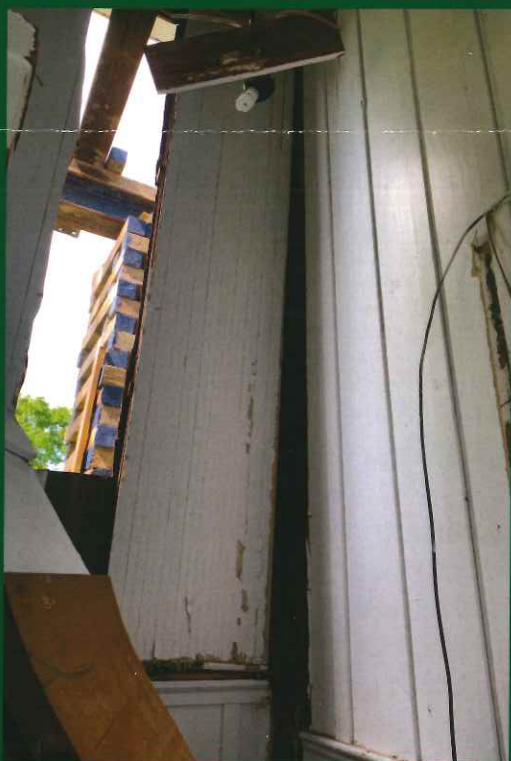


ALTO PRESBYTERIAN CHURCH RESTORATION PROJECT



After the tornado:



The tornado did not destroy the church building, but walls in the restroom area (northwest corner) were damaged.



The restroom door and half of the wall was detached during the storm and crashed into a window facing the porch.

May 2021

A rainy, wet standstill.

Those of you in northeast Louisiana know we have had an extraordinarily wet spring. Since the church was lifted, it has rained (much of it downpours) at least once a week. Drainage on the property was already an issue, and drainage under the building is part of the problem we are trying to solve. Unfortunately, with the ruts large machinery has caused, the water seems to have no where to go. As you will be able to see in the adjacent photos, water has been standing under the building, on the church ground, and in the cemetery. Every week, we pray that it will dry so reconstruction can begin. Still, the rains continue to come.

A tornado causes more damage.

On May 4, a tornado crossed over Alto. Luckily, it did not touch down, but it did grab mature trees, pulling them over, breaking them in half, and causing havoc. A tree one pasture over from the church fell on a cow and her newborn calf, killing the cow and trapping the calf. The winds also caught the church and apparently shook the building. One of the inside walls disconnected from the north side wall, and half of the restroom wall broke free and fell into a window, breaking it. That said, the building still stands. It's been speculated that the only reason the building may have survived are the wall slits and space beneath that allowed winds to pass through

Construction costs continue to rise.

Anyone in the construction industry will tell you that the lumber shortage has prices at an all time high. We continue to monitor it, especially the plywood prices. Plywood will be needed to replace the subfloor once the foundation is rebuilt. Recent inquiries have put the cost of a single sheet of 3/4 inch plywood at between \$67 and \$98.

Next steps.

As we wait for weather conditions to improve, we address the impact rising prices will have on our budget. We are currently compiling a list of materials we will need to complete Phase One, and we will be asking you to help us find the materials we need. Perhaps you know someone who has leftover items



Two new sets of note cards now join the original Douglas Breckenridge design in our Etsy store. Enjoy a special discount when you buy all three!

Contact Us:

Alto Presbyterian Church
c/o P. O. Box 2466
Monroe, LA 71207

email at
AltoPresbyterianChurch@gmail.com or
sartor@sartorassociates.com

YouTube:

Alto Presbyterian Church

Follow on Facebook:

www.facebook.com/altopresbyterianchurch

GiveSendGo:

<https://www.givesendgo.com/altopresbyterianchurch>

Teespring store:

<https://save-alto-presbyterian-church.myteespring.co/>

Etsy store:

<https://www.etsy.com/shop/SaveAltoPresbyterian>

from building a home. Perhaps you know someone in the home improvement industry who can help us get discounted pricing. A comprehensive list will be sent you upon its completion.

Where we stand financially:

As of this printing, we have raised \$8,000 more than our original Phase 1 goal. We know we can't stand still with material costs rising. We continue to ask for donations through our GiveSendGo site, and we just introduced new merchandise featuring the church building on Teespring.com. Our Etsy store now has new note card designs, and there is a special deal for those who buy all three note card collections.

"Be of good courage, and he shall strengthen your heart, all ye that hope in the Lord"

– Psalm 31: 24

WHAT CAN I DO TO HELP?

A lot! Here's a list:

- Pray that weather and ground conditions improve so that we may continue the repairs.
- Share this newsletter with those you feel would be interested.
- Check with anyone you know who has been involved in construction to see if they have any leftover supplies they could donate.
- Check out and share our Etsy and Teespring stores.
- If you can spare another donation, we would be most grateful.
- Let us know if you have any other ideas on how we can adapt to this changing reality and preserve this cherished, unique building.

Thank you again for your support, your prayers, and your donations. May God bless you with a wonderful and productive summer.



Spring rains continue, and standing water has no where to go. Water stands in the church yard, and collects under the Sunday School rooms in the back of the church.